



Japan & South Korea

La Confrérie de la Chaîne des Rôtisseurs Chapitre

Ultra-Luxury All-Inclusive Cruise

11 DAYS • SPECIAL GROUP DEPARTURE
16-26 APRIL 2026





Cher Membre,

It gives me a great pleasure to invite you to join our first Chaîne des Rotisseurs Australian Bailliage Cruise in the Asian region. We will be Cruising from the 16th to the 26th of April 2026 so join us and experience the camaraderie of the Chaîne.

The Crystal team are excited to host the Chaîne des Rotisseurs and there will be bespoke dining experiences a Masquerade Cocktail party and a Gala dinner following the Chapitre for our members and much more.

If you wish to join us and receive further details please register your interest by filling in the form via the Zeppelin Travel website: www.zt.com.au/chainecrystalcruise

For members wishing to experience the Cherry Blossom whist in Japan we will be arranging hotel accommodation for 2 days prior to sailing/boarding.

Please let me know if you require details on this.

Looking forward to seeing you all on board.

Vive La Chaîne!

Kind Regards

Norm

Norm Harrison
Bailli Délégué Australia
Membre du Conseil Magistral
Commandeur
La Chaîne des Rôtisseurs



CRYSTAL, EXCEPTIONAL AT SEA

Join us on Crystal for the voyage of a lifetime, where days are spent immersed in the world's most breathtaking destinations, and evenings are elegant affairs filled with fine dining, entertainment and captivating company.

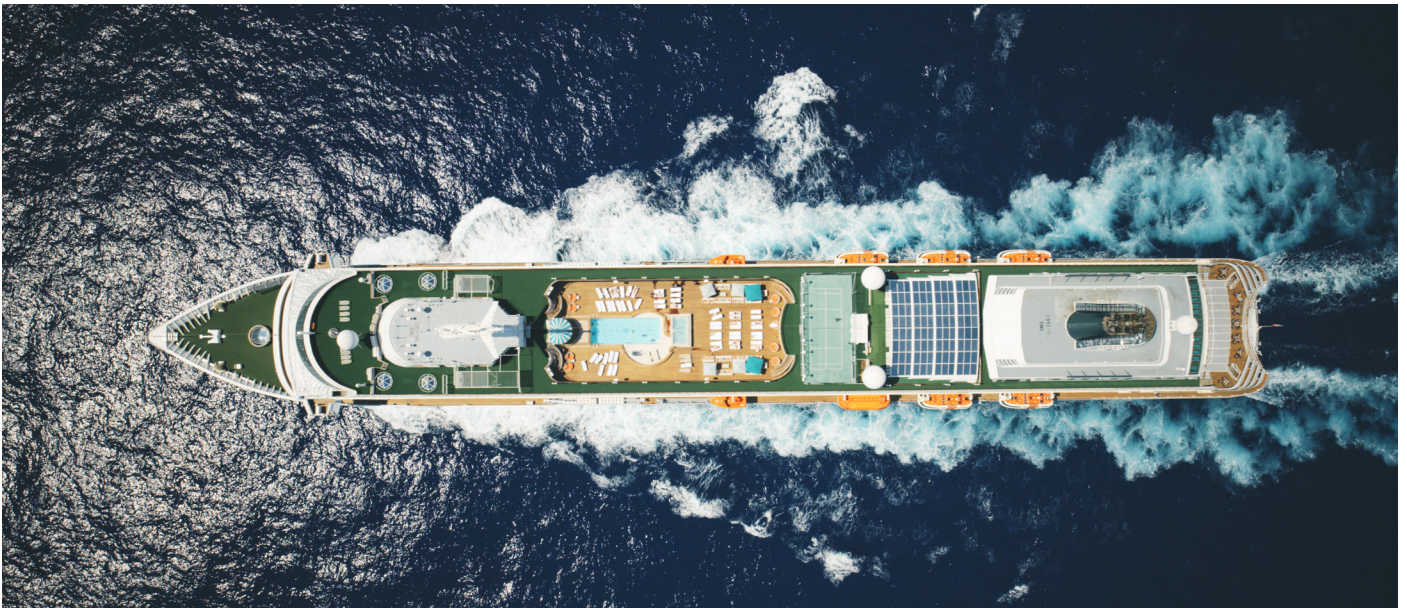
Step aboard and be warmly welcomed into a world of comfort and sophistication on Crystal Symphony, where crew knows you by name and your every nuanced wish is taken care of.

ULTRA ALL-INCLUSIVE

On Crystal ships, all-inclusive means precisely that: everything is complimentary, from start to finish.

Every restaurant, every bar. Not just buffet breakfasts but tasting-menu dinners with wine pairings. Chef Nobu's Peruvian-Japanese-fusion creations at Umi Uma, Waterside's a la carte dishes of superb local and seasonal produce. The most beautifully presented patisserie at afternoon tea, premium wines and spirits at any time of day.

Butler service comes as standard for every single suite.
We've even taken care of tipping, so you don't have to think about it.





ITINERARY

| DATE | Day | Port |
|--------|-----|-----------------|
| 16-Apr | Thu | Tokyo |
| 17-Apr | Fri | Tokyo |
| 18-Apr | Sat | Day at sea |
| 19-Apr | Sun | Osaka |
| 20-Apr | Mon | Matsuyama |
| 21-Apr | Tue | Beppu |
| 22-Apr | Wed | Fukuoka |
| 23-Apr | Thu | Nagasaki |
| 24-Apr | Fri | Jeju |
| 25-Apr | Sat | Mokpo |
| 26-Apr | Sun | Incheon (Seoul) |



**PLEASE REGISTER
YOUR INTEREST:**

www.zt.com.au/chainecrystalcruise



The Professional Centre, Suite 1, 189 Ashmore Road, Benowa

Phone: (07) 555 79 888 | Freecall: 1300 786 888

info@zt.com.au | www.zt.com.au

 [zeppelintravel](https://www.facebook.com/zeppelintravel)  [zeppelintravelau](https://www.instagram.com/zeppelintravelau)

